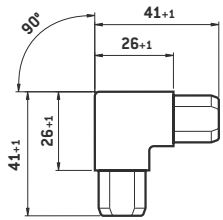


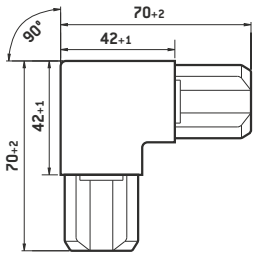
CORNER CONNECTOR LE 12X18



Material	Item number	Weight kg
<b>Fine zinc alloy</b> GD-ZNAL4CU1 (Z410)	101301	0.04
<b>Stainless steel cast alloy</b> GX5CrNi19-10 // polished grain 320	100863	0.06

Suitable for profile edging LE 12x18

CORNER CONNECTOR LE 20X30



Material	Item number	Weight kg
<b>Fine zinc alloy</b> GD-ZNAL4CU1 (Z410)	101300	0.23
<b>Stainless steel cast alloy</b> GX5CrNi19-10 // polished grain 320	100861	0.32

Suitable for profile edging LE 20x30